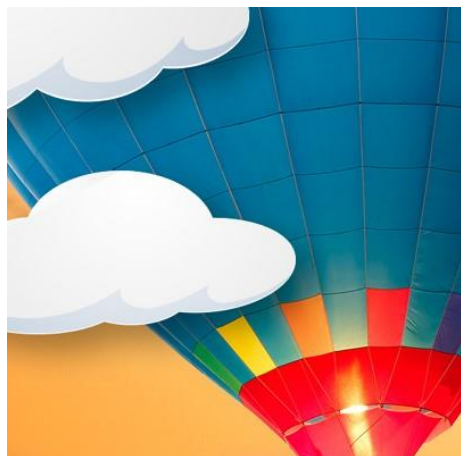


# Are we nearly there yet?

Summer Term 1,  
2018  
Reception



During this term, we will learn about different forms of transport.

We will have a visit from a fire engine and police van.

TOPIC INFORMATION

Play games to develop awareness of space in PE and in outside area

Explore ways of travelling under, over and through with a focus on linking movements

Games

- hit ball along ground
- bounce ball with bat to others
- hit ball into air upwards
- let ball bounce then hit forward
- dribble ball along with feet
- send ball to others along ground
- kick ball at a target

Connect a river for floating boats using guttering

Make boats that float

Build wheeled vehicles eg. cars, trains etc. from construction kits

Construct models of different vehicles using recycled materials eg. boats, aeroplanes

Take part in our annual May Dancing

PHYSICAL DEVELOPMENT

Use ordinal number

Collect information in a survey about how we get to school and count responses

Sort different types of transport

Solve simple practical problems

Use hour times for simple bus/train timetables

Buy tickets with money

Use positional language when creating/writing clues for treasure hunts

Make labels for outside route and direct others around it using positional language

Describe journey to school using positional language

MATHEMATICS

Develop role-play area into a travel agent

Listen to stories on listening centre

Retell stories with story props/small world toys/puppets/masks

Compose postcards and letters

Make a class version of 'The Train Ride' story

Make a map or treasure hunt with clues for friends to follow

Make lists for packing suitcase to go on a journey

Write labels for building designs

Make signs and write directions for a journey in outside area

Write own stories about a journey

Make road safety posters

Form letters in name correctly using pens, paints, sand, by labelling models

COMMUNICATION,  
LANGUAGE AND LITERACY

Talk about likes and dislikes of the local area

Discuss ways of improving the local area

Consider which country we would like to visit.

Consider which forms of transport we use on a regular basis and which transport we would use to make long journeys.

Investigate objects that float and sink in water tray

Build boats using different materials

Investigate different materials and their purpose

Sort transport types into sets e.g. wheeled/not wheeled

Draw a train or boat on colour magic

Observe changes in the outdoor environment; weather, garden, plants, animals

UNDERSTANDING THE WORLD

Learn about different vehicles and forms of transport through stories and books etc.

Role-play real and imaginary journeys

Discuss safety on journeys e.g. road and water safety

Make posters to display rules about road safety

Empathise with characters from different stories

Dress up in uniforms to be different characters in role-play journeys

Retell stories about journeys using puppets and small world toys

Compare different 'moral themed' stories

PHSE; discuss choices made by characters in stories and link to our positive classroom rules

PERSONAL, SOCIAL AND  
EMOTIONAL DEVELOPMENT/  
PSHE

Dance confidently during our May Dancing Performance

Paint pictures of different types of transport

Make vehicles using recycled materials

Design posters for road safety

Make up imaginative stories about different journeys

Make our own maps and devise our own treasure hunts

Sing songs relating to transport e.g. "Train is-a coming", "The wheels on the bus"

Explore dynamics of loud/quiet, fast/slow and high/low when creating music to accompany transport movements

Explore instruments to create sounds to represent transport e.g. whistling trains

EXPRESSIVE ARTS AND  
DESIGN